

THE COUNTY CHRONICLE

COUNTY OF WARNER NO. 5



SPRING 2012

COUNTY OF WARNER NO. 5

AGRICULTURE SERVICE BOARD
202 County Road, Box 90
Warner, AB T0K 2L0

Phone: (403) 642-2255 • Fax: (403) 642-2256
Toll Free Call: 1-866-642-2221

Jamie Meeks, *Agriculture Fieldman*
Cathy Preston, *Assistant Fieldman*
Kerry Hyatt, *Municipal Conservation Technician*
Website: www.countyofwarner5.ab.ca

COUNTY OF WARNER NO. 5 ADMINISTRATION OFFICE

300 County Road, Box 90, Warner, AB, T0K 2L0
Phone: (403) 642-3635 • Fax: (403) 642-3631
New Toll Free Number: 1-888-642-2241

.....
SHAWN HATHAWAY, *Administrator*
TYLER NELSON, *GPS/GIS Coordinator*
MORGAN STRATE, *Property Assessor*
SHAWN HATHAWAY, *Economic Development Officer*
ALISON BLY, *Secretary/Receptionist*
GLENNDA LAGLER, *Tax Department*
TRACY OSTENBERG, *Payroll/Accounts Receivable*
RANDY SHAW, *Accountant*
SCOTT SIMPSON, *Community Peace Officer*

PUBLIC WORKS CONTACTS:

Phone: (403) 642-3833 • Fax: (403) 642-3832
New Toll Free Number: 1-888-642-3831

LARRY LIEBELT, *Public Works Superintendent*
RICK CARLSON, *Parts Department*

COUNCIL MEMBERS

WARREN CUNNINGHAM, *Division 1*
div1_mr@countyofwarner5.ab.ca
ROSS FORD, *Division 2*
div2_co@countyofwarner5.ab.ca
PHIL JENSEN, *Division 3*
div3_ra@countyofwarner5.ab.ca
RANDY TAYLOR, *Division 4*
div4_nd@countyofwarner5.ab.ca
BOB JONES, *Division 5*
div5_wa@countyofwarner5.ab.ca
JAMIE MEEKS SR., *Division 6*
div6_st@countyofwarner5.ab.ca
GEOFFREY KROKOSH, *Division 7*
div7_wr@countyofwarner5.ab.ca

Signs of Spring



Message from the County of Warner

The past year brought about many changes within the County of Warner operations. We would like to thank all of the staff members, past and present who brought us to where we are today and look forward to working with those who will take us into the future.

The spring edition of the Chronicle will provide a brief overview of what went on in 2011, a little about what we do and outline some changes coming for 2012.

We are reviewing and updating many of our current policies and procedures. One of our main goals is to provide relevant services to our residents, improve efficiency in the delivery of those services, while maintaining the current level of taxation (no increase to the mill rate). If you have any questions or suggestions about our services please feel free to contact us.

Ross Ford, Reeve

Thank you to all the
FIREFIGHTERS AND VOLUNTEERS
that helped with the
Milk River Ridge Grass Fire last November





Message from the County Administrator

The 2011 year for the County of Warner was one that brought on many challenges; there was severe flooding in June and a fire that ravaged through the Milk River Ridge in November. The County also went through a transition mid-way through the year having both their Administrator Allan Romeril and Public Works Superintendent Bob Coppieters retire. There was also a change at the elected level seeing Ross Ford take over the role of Reeve for the County.

In an attempt to provide a better understanding of County operations a decision was made to provide a recap of what was accomplished in 2011. The County of Warner is served by 7 elected officials, 35 full time staff, and at times up to 45 seasonal staff providing the services that County Residents are looking for. There are many departments in the County of Warner. This summary is an attempt to give you an overview of the many programs and services offered by these dedicated people.

AGRICULTURAL SERVICE BOARD

Agricultural Service Boards were originally set up in the Province of Alberta in 1945 to allow for more local authority in the areas of weed infestation and soil erosion. Since that time the role of Agricultural Service Boards has expanded and varies depending on the area that they serve. Over the 2011 year the County of Warner Agricultural Service Board has participated in many worthwhile projects and we want to bring to your attention some of the things that they do.

Conservation Program - Focusing on sustainable agriculture practices such as wind erosion, manure and nutrient management, integrated crop and pest management and riparian and grazing issues along the Milk River. Assisted groups like the Milk River Watershed Council Canada (**water quality sampling for Milk River and Red Creek**) and the Milk River Ranchers Program with their conservation efforts as well as individual landowners through one-on-one visits and salinity workshops, age verification, crop pest and disease updates. The County of Warner also supported the Youth Range Days camp held at Writing-

on-Stone Park as well as the Southern Alberta Grazing School for Women.

Another very important thing done by our Agricultural Service Board is the roadside Spraying and Roundup Program. Nearly 1600 miles of roadside ditch was sprayed in 2011 along with 500 miles of road Roundup completed. The road roundup program is designed to minimize grass creeping into municipal roadways.

Weed Inspection and Control – The Agricultural Service Board has many different programs that control the spread of weeds throughout the County, from custom spraying to noxious weed control. The Agricultural Service Board works with producers, and other government bodies to look after the spreading of weeds before it becomes too big of a project.

Tree Sales and Service – The Agricultural Service board once assists in shelter belt programs by offering for sale evergreen trees at a very attractive price as well as assisting with the distribution of PFRA shelter belt program trees. There is also available for fee tree planting service and insect control.

The County of Warner is in control of two significant recreational areas Chin Park and Ridge Park. The Agricultural Service Board is instrumental in assisting operators to ensure that the parks remain an inviting place for residents and visitors to our County. This last year saw significant upgrades to Ridge Park thanks to a grant from the Provincial Government. If you haven't done so already we encourage you to go and check the new facility out.

COMMUNITY PEACE OFFICER

The County of Warner has one full time Community Peace Officer that is responsible for complaints and permitting; the County's health and safety program and is also the Director of Emergency Management. Below are some highlights of what was completed this past year.

County Safety Program – the County of Warner has had a Certificate of Recognition (COR) with the Alberta government for the last 15 years. The ability to hang on to this certification allows the County to contract to the Province on different jobs bringing more infrastructure to the area while allowing the County to earn revenue to offset taxes. To maintain this COR recognition a stringent

Health and Safety Policy has been developed and all County staff are provided with continuing training to ensure that the workplace remains productive and safe.

Emergency Management – the County of Warner has provided training for Council and staff to get a better understanding of what is required in a case of a disaster. There is staff trained on the new Alberta public warning system, as well as basic emergency management training. The County is currently redoing its disaster plan and is committed to ensuring the safety of all residents in case of a large scale disaster.

Fines and Permitting – over 350 overload permits were issued over the year for overload permits to travel on County roads. Divisional fire chiefs are responsible for issuing fire permits but when they are unable to be reached our Community Peace Officer looks at the issuing of these permits and over the last year only 4 were issued by the Community Peace Officer.

Over the year there were 40 complaints investigated by the CPO. When the complaints are received phone calls and some inspections are required and the proper follow up is then completed. There are issues where the CPO does not have jurisdiction and this is then passed on to the proper authority.

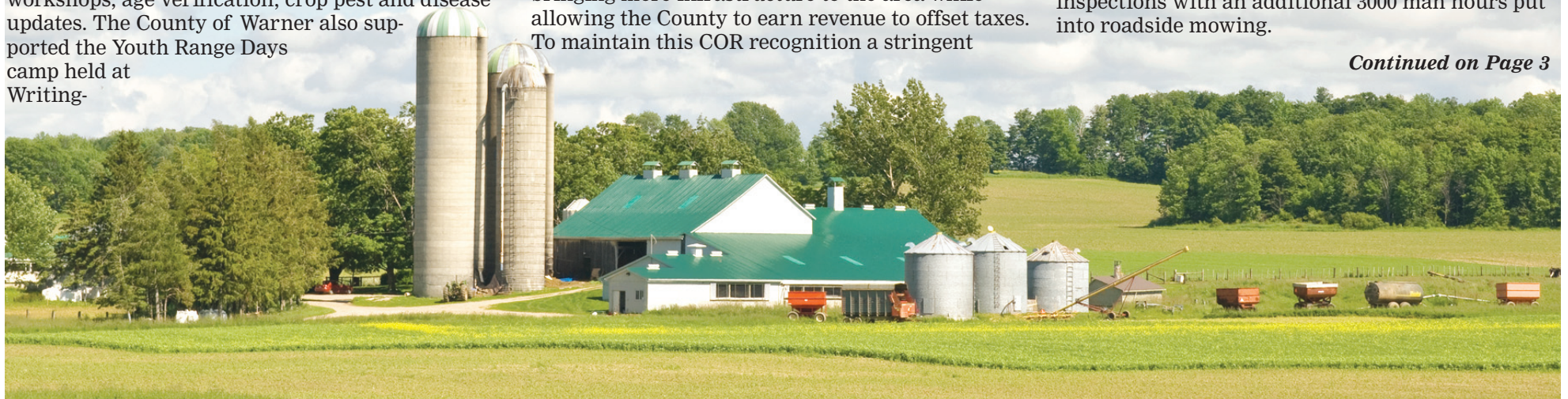
PUBLIC WORKS

The Public Works Department is responsible for maintaining nearly 2000 miles of roads in the County of Warner. This past season was a productive one for the Public Works department. Following are the highlights of some of the more major items that were completed this year:

There was a total of 6.25 miles of new high grade gravel road constructed in 2011 with an additional 4 miles of summer graded trail and 1 mile of bladed trail constructed during our building season. There was also over 250 miles of new gravel placed on existing County roads, and another 15 miles of dust suppression and road oiling completed throughout various areas of the County.

The road maintenance for the County saw nearly 7000 man hours dedicated to road grading and inspections with an additional 3000 man hours put into roadside mowing.

Continued on Page 3





Continued from page 2

There was also the repair and cleaning of 12 Texas gates at various locations as well as the installation of over 2000 feet of culvert in 48 different locations. This was all on top of the over 40 locations that needed to be repaired or rebuilt due to the spring flooding as well as the set up and repair of fire breaks during the fall fire on the Milk River Ridge.

The Public Work Department has also installed more than 1000 rural addressing signs in the County. Rural addressing is the new standard that the Province is looking at moving emergency dispatch to. Once everyone is complete the new Rural Address that has been assigned to all properties with housing or major developments will be used to identify your property when calling an emer-

gency to 911. There are still approximately 120 signs left to install and another handful that need to be fixed before the project can be turned over to the utility companies. For those that are interested in how the rural addressing works there is an explanation on the County website.

ADMINISTRATION AND FINANCE

The Administration department in the County has several departments looking after tax and assessment, accounts payable and receivables, ensuring that the elected officials have the necessary information they need to make educated decisions that benefit County operation as a whole, as well as ensuring that all legislated requirements are made according to the various pieces of legislation that guide municipalities. There are over 9000

tax rolls in the County of Warner that are prepared and maintained by our tax department.

Fiscally the County of Warner strives to provide quality services to its rate payers in a cost effective manner. In 2011 the County collected \$ 6,269,360 in taxes with approximately \$2,044,777 being collected for third parties to cover items such as Education, Seniors Housing, Family and Community Support Services, Landfill Operations Economic Development and Tourism, Community Planning and Recreation contributions to our urban partners. The County sources out provincial and federal grants to offset property taxes, and has a variety of different fees for services set up in an attempt to try to keep the mill rate reasonable. The audited financial report for 2011 will be available for viewing on the County of Warner website sometime in mid to late May for those that are interested.

*Congratulations Cameron and
Janelle Schmitt Family!*

Farm Family Award

Local Farming Family Receives Calgary Stampede Award

Congratulations to Cameron and Janelle Schmitt! They are the recipients of this year's Farm Family Award!

The Calgary Stampede and BMO Bank of Montreal will be hosting the Awards Ceremony during this year's Stampede to hand out this award to the deserving Southern Alberta Recipients that have been farming or ranching for 100 years or more in Alberta.

The objective of the award is to recognize outstanding Southern Alberta farm families "who best typify the value of the family farmer

to our rural communities and society in general and to honor these families at the Calgary Exhibition and Stampede," says an information sheet from the Calgary Exhibition and Stampede. Each year residents are asked to select a family that deserves recognition for both agricultural and community involvement. The family must be active in primary agriculture, have agriculture as the main source of their income and have members residing on the farm. This year, the Schmitt's are that family!

Knowledge Nuggets

on **PASTURE MANAGEMENT**
from Foragebeef.ca

- Pasture managers view themselves as grass farmers and the livestock as a means of marketing the forage. The goal is to produce good-quality forage for as much of the year as possible and then choose livestock that best market it.
- To maintain a productive plant community requires skillful management. Understanding animal: plant interactions and their influences on overall pasture production is key.
- In setting production goals, consider the economic return per acre rather than production per animal. Compare production per acre or per dollar invested rather than weaning weights.
- Most cow-calf operations have lower nutritional needs than do stocker enterprises. If high-quality forage can be consistently produced, a stocker enterprise may be a good economic option. Different classes of cattle, horses, sheep, or goats might be more suitable for the feed source and management.
- Time controlled grazing has become popular and improves profits. Pastures are divided into paddocks where the land is grazed for short periods of time and the livestock is removed to ensure the plants have adequate time to recover before being grazed again. Because this requires more knowledge of forage plants and pasture-animal interactions, controlled grazing is often referred to as management-intensive grazing (MIG).



Great Plain No Till Drill

2012 Rental Rates



AG. SERVICE BOARD SERVICES OFFERED AND RENTAL RATES FOR 2012:

Great Plains No Till Drill

15 Acres or Less:
\$25 Service Charge plus Flat Fee of \$200
or 16 Acres or More:
\$25 Service Charge Plus \$12 Per Acre
■ \$1,000 Damage Deposit
■ \$100 Clean Fee if Drill is not cleaned satisfactory

The Great Plain No Till Drill is a twelve foot drill that is available to rent to producers within the County of Warner. The drill has several features that will allow for easy seeding and maneuverability. The end wheel design "keeps all ground working components in line with the end wheel preventing any side loading when working on rolling terrain and contours; the staggered openers provides unobstructed flow of residue through the machine; and this machine includes the fluted feed seed cup that accurately and gently delivers a wide variety of seeds. With these kinds of specifics, the machine would be perfect for small grass plots focusing on salinity concerns, water discharge or recharge areas, or other reclamation programs.

Pasture Pipeline Plough

\$25 Service Charge
Plus either \$50 per Day
or \$30 per Half Day
■ \$1,000 Damage Deposit

The Pasture Pipeline Plough is available to rent from the Agriculture Service Board to County of Warner rate payers. It has received great reviews from the people who have used it in the past and it should work for any job. This machine is capable of burying in a 2 inch pipe up to 36 inches deep, which means minimal or no freezing until late fall and allows for good water flow to troughs. The producers will need to provide a tractor no less than 100 HP and no more than 160 HP to operate the plow and several guidelines need to be met, as indicated in the Rental Agreement papers, before the plow can be rented out; Road Crossing Agreements need to be signed, a map of infrastructure that the pipe will be crossing needs to be filed out, and an Alberta First Call needs to be made with a Confirmation number ready to present to the Ag. Service Board staff.

Solar Watering Station

Borrowed on a first come, first serve basis.

The Ag. Service Board has a solar pump water trough available for County of Warner rate payers to use if they would like to try an alternative solution for watering their animals. This system works great to keep animals from trampling the river banks and river bed, or even if you want to keep them out of a dugout. In the past, if the trough is set up right, most dugouts do not have to be fenced off for the cattle to use the trough. They prefer easy access to water and would rather learn to use the trough than to get muddy getting to water in the dugout or river. If a fence is required, just to be sure they will not use the river, creek, or dugout at all; a one string electric fence will usually do the trick. This trough is fed by a 24 volt floating pump that has 100 feet of lift. The pump is powered by two 12 volt deep cycle batteries, which stay charged by two 110 watt solar panels. The reserve tank, which sits above the calf trough, is a 900 gallon tank; the cow trough holds 500 gallons and the calf trough holds 100 gallons which only the calves can reach. This watering system is low maintenance.

CASE UNILOADER c/w Auger/Tree Spade c/w Operator
Rural \$25 Service Charge Plus \$65 per Hour or
Urban \$30 Service Charge Plus \$70 per Hour

ACRE WHEEL COUNTER - \$50 Deposit, 10 Days Maximum,
Deposit cashed after First Phone Call

TREE SPRAYING c/w Operator
\$25 Service Charge Plus \$30 per Hour Plus Total Cost of Chemical

WEED SPRAYING - Private -
Noxious Weed Control - Policy 630.19
\$25 Service Charge Plus \$105 per Hour plus Total Cost of Chemical

TREE PLANTERS - \$25 per Day

PLASTIC MULCHER APPLICATOR - \$25 per Day

BACK PACK SPRAYER - \$155 Deposit, 10 Days Maximum
Deposit cashed 10 Days after First Phone Call

SKUNK AND RACCOON TRAPS - \$70 Deposit
30 Days Maximum, Deposit Cashed 10 Days after First Phone Call

RFID TAG READER - \$15 Per Day
Plus \$100 Damage Deposit is required at Time of Pick Up

MOWING - Private Rural \$67.50 per Hour
- Private Urban \$90.00 per Hour



TREES for SALE

The County of Warner has entered into a one year agreement with a local tree farm, who has agreed to sell a limited number of

COLORADO BLUE SPRUCE TREES

The County will be selling these 6-8 foot trees for \$85/tree to a limit of 5 trees per farmstead.

Sale will be on a first come, first served basis for rural residences only, but notification and commitment to purchase these trees will be required. Please contact the Ag Service Board if you would like your name on the list as well as the number of trees you would like.



PRAIRIE SHELTERBELT PROGRAM

Agriculture and Agri-Food Canada will be delivering any trees ordered through the Prairie Shelterbelt Program to the Ag Service Board Shop in April.

Someone from the Ag Shop will contact you when your trees arrive and just as a reminder, a shipping charge of \$20 applies to all tree orders delivered to the County of Warner.

BURNING *within the* COUNTY OF WARNER

With the recent updating of the Fire Bylaw, it is again time to remind everyone of the County's rules for any burning within the County of Warner.

All open burning requires a Fire Permit from your divisional Fire Chief or their designate. This Permit is required at all times unless a fire ban is in effect.

Open burning refers to all fires except those in a non combustible burning barrel or concrete type enclosure that has a screened top so as not to allow any burning debris to escape. If your burning barrel has no screened top, then under the Bylaw you are required to have a fire permit. All fire permits are good only for the day of the reported burn. Burning barrels are only allowed to be used to burn when in the upright condition. All burning

debris must be contained within the burning barrel and a metal mesh screen must be covering the entire top of the barrel. Any deviation from this then requires a burning permit.

All unauthorized fires may be subject to a \$500 fine for a first offence. All unauthorized fires may be extinguished by the local fire department and you may receive a bill for the costs incurred putting out your unauthorized fire.

If you are in doubt of whether a Fire Ban is in place for the County of Warner, you may contact your local divisional Fire Chief, the County Peace Officer or it will be posted on the County's web site at www.county-of-warner5.ab.ca or may be listed on the Provincial Fire Ban web site. Questions may be directed to the County Peace Officer at 403-642-7555.

DIVISIONAL FIRE CHIEF CONTACTS:

ADEN

Chief Eric Bianchi Phone 403-344-4437 or Cell 403-344-4438
John Ross Phone 403-344-4333

COUTTS

Chief Mark Stanford Phone 406-335-2534, Cell 403-642-7599
Work 403-344-4512
Jan Johnson Phone 403-344-0008, cell 403-642-7072

MASINASIN

Chief Roy Brown Phone 403-647-3797, Cell 403-642-7844
Dave Erickson Phone 403-647-2289

MILK RIVER

Chief Mark Thompson Phone 403-647-2569, Cell 403-642-7901
Don Cody Phone 403-647-7649

WARNER

Chief Rick Carlson Phone 403-642-3989, Cell 403-642-7155
Work 403-642-3831
Jason Jones Phone 403-642-7778

WRENTHAM

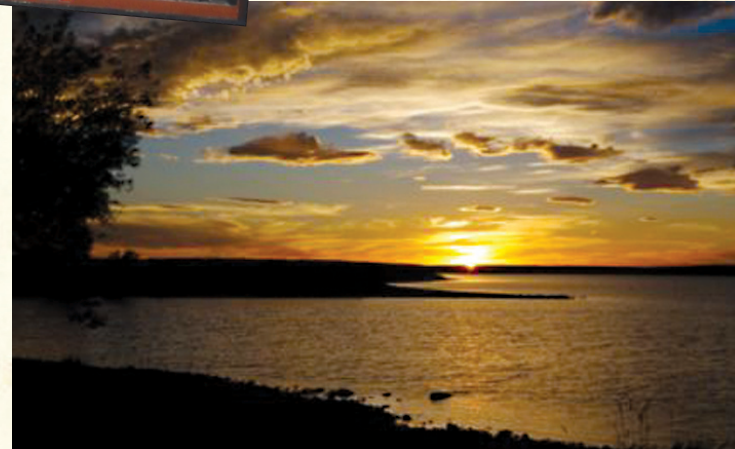
Chief David Nilsson Phone 403-222-2346, Cell 403-635-7241
Mike Amen Phone 403-222-2336, Cell 403-715-2253

STIRLING

Chief Fred Hillyer Phone 403-756-3034, Cell 403-635-2057
Thomas Hodder Phone 403-635-2058

RAYMOND

Chief Charlie Holt Phone 403-752-3595, Cell 403-308-8279
Doug Holt Phone 403-752-3908, Cell 403-330-5549

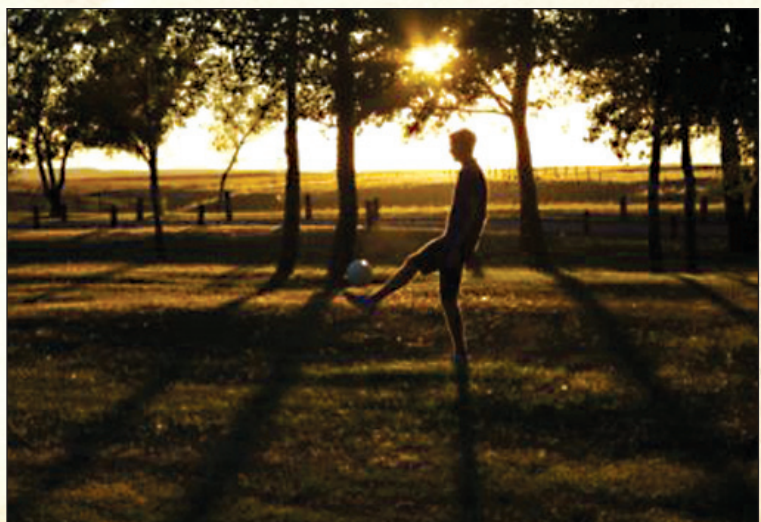


RIDGE PARK Warner, Alberta

(Ridge Park HAS undergone some renovations this year; including our 14 slip marina and boat launch. Camping and Day Use/Boat Dock areas are open to the public; the number of camp sites has been increased to 54 sites.)

**Fishing and Boating at the Ridge Reservoir
Windsurfing and water-skiing on the Milk River Ridge?**

Ridge Park, a locally popular campground on the south side of Milk River Ridge Reservoir, can be reached on Hwy 844 just west of Raymond or going east on Hwy 506 near Warner. The 16 km (10 mile) long reservoir has plenty of room for waterskiing and includes some variety of scenery on the water with several islands east of the campground where seagulls from a large surrounding agricultural area come to spend the evening and many birds fill the sky near sunset. Ridge Park has sites with electrical hookups, playground, boat launch and 14 slip marina, four camp kitchens, a dock, swimming area and washrooms, and overflow area. Potable water and Concession is available. A large grassed open play area adjoins the playground make this a favorite spot for young families. Stay for a few nights of camping or come just come to play for the day. No reservations accepted.



CHIN PARK

Chin Park is located on a large irrigation reservoir. It is located on Highway 36, approximately 22 miles north of the Village of Warner and south of the Town of Taber on Chin Reservoir. There are 12 sites with electrical hookups and an overflow area. The park is owned and maintained by the County of Warner No. 5. There is a boat dock, boat ramp, swimming area, camp kitchen, and washrooms. Potable water is available. The park is open from April 15 to October 15. Seasonal campground manager may be contacted at 403-642-3635. No reservations accepted.

RIDGE and CHIN PARK
Info seasonally at: 403-642-3635

Non Service Site/Night – \$20
Electrical Service Site/Night – \$25
Day Use/Boat Dock fee – \$3

The park is open from April 15 to October 15.



2012 Public Works Update

Please note that we have recently made some changes to the way we will be scheduling our work starting in 2012.

DUST CONTROL

Request forms can be found on the County of Warner No. 5 website or can be picked up at the Public Works Shop – they can be faxed, emailed or delivered in person to Public Works. Deadline for requesting dust control will be May 15, 2012. The cost per foot will now be \$1.00.

Hold Harmless Agreements are also available on the website at the Administration Office or the Public Works Shop. These agreements must be signed before any County Equipment can perform work on private property such as hauling gravel, snow-plowing lanes, weed spraying, tree spraying, tree moving, etc, etc.

GRAVEL

Individual landowners are allowed to purchase a maximum of forty (40) yards of gravel per year. This gravel can either be spread on a lane or roadway, or placed in a pile at a location agreed to by the land owner and gravel foreman or his designate. Request forms can be found on the County of Warner No. 5 website or can be picked up at the Public Works Shop – they can be faxed, emailed or delivered in person to Public Works. The delivery of gravel will be done when we are at the closest pit.

Deadline for requesting yard gravel will be May 15, 2012. The cost per yard will now be \$7.00 from all pits, plus the haul cost.

PUBLIC GRAVEL LOADING

The county council has made a decision not to offer this service any longer to allow for better scheduling, and time management as well as to limit activity in our pits for safety reasons. This service will be replaced by a request for gravel and the county hauling to your yard and placing the gravel in a pile or spread on your lane.

ROAD SETBACKS

Development Information:

Buildings and other developments/improvements such as dugouts must be at least 150 Feet from the center line of the nearest county road unless the road is a primary or secondary highway. IF the road is a primary of secondary highway, the setbacks are established by Alberta Transportation.

New Shelterbelts:

New shelterbelts must be set back 25 Feet from any property line and must be set back at intersections so sight lines are not obstructed. The above setbacks are also required for undeveloped road allowances.

Stockpiles:

Stockpiles are defined as the temporary storage of materials on or off a hard surface. Materials stored include: soil, manure, forage crop, or machinery.

The setbacks in the above paragraph must be met. A full Copy of the Land Use By-Law and Development application forms are available on our website www.countyofwarner5.ab.ca.



Along the Milk River –
watch for:

INVASIVE WEEDS

Education & Awareness Signs

This past year, the County of Warner was able to apply for some funding through the Alberta Stewardship Network- Watershed Stewardship Grant to produce and provide Invasive Weeds education and awareness signs. Installed within access locations along the Milk River, these signs address the concern of the spread of invasive weeds throughout the Milk River Watershed, and create a learning opportunity for watershed residents, and visitors along the Milk River.

Nine signs were designed with images of invasive

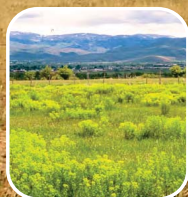
weeds, contact information, and reporting. The County of Warner is requesting the public to contact the Ag Service Board at 403-642-2255 if they notice any of these weeds by noting down the weed type, location and date.

Please help control the spread of these invasive weeds and stop the invasion before it reaches native grasslands. These species spread rapidly, reduce grassland productivity, and threaten wildlife habitat. The County partnered with the Milk River Ranchers Group, Cardston County, the Town of Milk River,

Goldsprings Park, Writing-On-Stone Provincial Park, the Milk River Watershed Council Canada, and numerous landowners to make this possible.

Thank you to everyone who helped with the success of this project! The Ag Service Board wants to thank everyone involved for their support in making this project happen. The Board also wishes to thank Bonnie Hofer for the design and layout of the signs and Jenna Curtis, Lands Stewardship Center Canada, Watershed Grant Coordinator for her encouragement with this project.

WATCH OUT INVASIVE WEEDS in the County



Leafy Spurge (*Euphorbia esula* L.) is a perennial up to 3 feet tall; it reproduces by vigorous rootstalks and seed. Leaves are alternate, narrow, 1 to 4 inches long and the stems are thickly clustered. The flowers are yellowish-green, small, arranged in numerous small clusters and subtended by paired heart-shaped yellow-green bracts. Roots are brown, containing numerous pink buds which my produce new shoots or roots. The entire plant contains a milky juice. Seeds are oblong, greyish to purple, contained in a 3-celled capsule, each cell containing a single seed.

Leafy Spurge is native to Eurasia and was brought into the United States as a seed impurity about 1827. It infests almost 2.5 million acres in North America. It has been reported to cause severe irritation of the mouth and digestive tract in cattle which may result in death. Capsules explode when dry, often projecting seeds as far as 15 feet. Seeds may be viable in the soil for up to 8 years. An extensive root system containing large nutrient reserves makes leafy spurge extremely difficult to control.



Houndstongue (*Cynoglossum officinale* L.) is a biennial growing 1 to 4 feet tall and reproducing by seed. Leaves are alternate, 1 to 12 inches long, 1 to 3 inches wide, rough, hairy, and lacking teeth or lobes. Flowers are reddish-purple and terminal. The fruit is composed of 4 prickly nutlets each about 1/3 inch long.

Houndstongue was introduced from Europe. It forms a rosette the first year and sends up a flowering stalk the second year. The leaves are rough and resemble a hound's tongue. It may be found in pastures, along roadsides and disturbed habitats. The nutlets break apart at maturity and cling to clothing or animals. Houndstongue is toxic, containing pyrrolizidine alkaloids, causing liver cells to stop reproducing. Animals may survive for six months or longer after they have consumed a lethal amount. Sheep are more resistant to houndstongue poisoning than are cattle and horses. Horses may be especially affected when confined in a small area infested with houndstongue and lacking desirable forage. Therefore, ranges and pastures should be maintained to encourage production of grasses and high quality forage.



These weeds can spread rapidly, encroach on pastures and threaten wildlife habitat. If you see either of these weeds, please note the location and contact the County of Warner Ag Service Board: 403-642-2255





Agriculture Service Board welcomes CONSERVATION TECHNICIAN

The Agriculture Service Board welcomes:

KERRY HYATT

Municipal Conservation Technician
(403) 642-2255

What does the Conservation Technician do ?

Kerry does a variety of projects, workshops and demonstrations for producers in the County of Warner. As Conservation Technician, Kerry's job is to lessen the environmental impact of everyday practices on farmers and ranchers operations. She provides information and technical support for the operators so they can understand the importance and benefits of the changes or improvements they are working on.

Kerry is more than willing to visit with a producer on their farm, in their field or even at the Ag. Service Board Shop to discuss any concerns they may have with issues such as the location of their corrals, the salt ring that has shown up around their dugout, the health of their tame, native or forage pastures, or anything else that they feel is of importance to make improvements. She has many different resources that are available to her, so even if she cannot answer a question right away, she can find it for you.

PLEASE FEEL FREE TO PHONE HER AT THE Ag. Service Board Shop at (403) 642-2255 to discuss a meeting time or any agricultural issue that is of concern.



Blueweed



Scentless Chamomile



Leafy Spurge



Thistle

WEED CONTROL in the County

The control of noxious weeds in the county is a big part of the Agriculture Service Board's summer program and they work hard every year to ensure that these weeds do not spread. The following methods are used for control:

- Spraying all newly constructed roads;
- Spraying all established roads as deemed necessary by the Ag Fieldmen;
- Spot spraying for Canada Thistle and other noxious weeds;
- Spraying public areas as necessary.

If a landowner does not want the County to spray lands adjacent to their property for any

reason, a Memorandum of Agreement, which is valid for a one year period, must be signed. Signs that indicate that the owner does not wish for spraying must be visibly posted in these areas. The land owner must post a minimum of two signs, which are available at the County of Warner Office for a charge of \$5.00 each.

If you have any questions about which weeds are noxious within the County of Warner please contact the

at the AG SERVICE BOARD SHOP by calling (403) 642-2255.



Herbicide Resistant **KOCHIA**

Resistance to Glyphosate (Roundup) in Southern Alberta Kochia

Last summer, a grower contacted Dr. Bob Blackshaw (Lethbridge) about suspicious strips of green kochia in chem-fallowed fields that had been sprayed with glyphosate. Samples were taken to Saskatoon and the seed tested. This kochia was not killed by the usual rates of glyphosate and, like most kochia, was also resistant to Group 2 herbicides. Resistant kochia was selected by repeated use of glyphosate over many years.

A fall survey of 50 sites around the first fields revealed several more locations with resistant kochia. Kochia is a tumbleweed that spreads seed as it moves with the wind. In Kansas, where glyphosate resistant kochia was first identified, it has become a major concern and is spreading rapidly. To limit the increase of resistant kochia, growers, land managers, agronomists and Ag Fieldmen must be aware of the problem and modify practices to control both resistant and susceptible kochia.

Glyphosate resistant kochia can be killed by many other herbicides. Glyphosate remains a valuable herbicide for pre-seeding and chem-fallow applications but should be used in combination with other effective herbicides.

If you suspect some kochia are resistant to glyphosate in your area, please contact

Dr. Hugh Beckie (306 956 7251) for information on sampling and testing .





5th Annual

SOUTHERN ALBERTA YOUTH RANGE DAYS

July 17th-19th, 2012

This Southern Alberta Youth Range Days are an interactive event for youth, families, and leaders interested in learning about a variety of range, watershed, wildlife, and other related topics relative to natural resource management. Youth from all backgrounds including farm and ranch, acreage or town, are welcome to attend. This year's camp will be held on Rangeview Ranch, which is located in the heart of Canadian cattle country in Cardston County. Nestled atop the Milk River Ridge in the foothills of the Rocky Mountains, the property offers spectacular views of the renowned mountain range to the West and endless views of the prairie to the East.

- Ride through prairie grasslands horseback!
- Learn about Healthy riparian areas and wetlands!
- Float the Milk River!
- Better understand the importance of healthy Rangelands!
- Learn about Wildlife Management!
- WIN PRIZES!



SPACES ARE LIMITED: PLEASE REGISTER BY JUNE 20TH, 2012.

Cost is \$50 per person – Ages 13-18 ■ Families Welcome!

For additional information, a basic itinerary and to register, contact:

Steven Bevans 403-653-4977 (Cardston County)

Kerry Hyatt 403-642-2255 (County of Warner)



Brought to you by:



RANGEVIEW RANCH

<http://www.abworkranch.com>



9th Annual Southern Alberta Grazing School For Women

Starland County
Delia, AB
July 25-26, 2012

NEW THIS YEAR
Herd Health
Weeds & Invasive Plants

Registration Deadline: July 17, 2012
Registration Fee: \$70.00 (Meals Included)
Register early as space is limited!

For additional information or to register contact:
Amanda Halawell (ahalawell@cowsandfish.org)
Phone (403) 451-1182 Fax (403) 274-0007

For a detailed brochure,
check out "What's New" at:
www.cowsandfish.org



KNOWLEDGE NUGGETS

on Pasture Management
from Foragebeef.ca

- Grazed pastures need less fertilizer than those that are hayed. Animals use very few nutrients from the plants they eat as most minerals are returned in animal manure and become part of a natural cycling of nutrients. When manure is evenly distributed throughout the paddocks and earthworms, dung beetles, and soil bacteria are active, nutrients will be recycled quickly.
- Soil tests and forage analysis are useful to monitor mineral nutrients in the soil and whether nutrients are actually being used by the plant. Results include fertilizer recommendations based on field history and planned use. Recommendations may not be accurate for pasture because they may not account for the recycling of nutrients by the grazing animals.
- Producers may be best able to evaluate fertilization needs based on their observations of productivity and nutrient cycling in their paddocks and using the soil test to monitor changes in soil chemistry and nutrient levels.
- Legumes in the mixture increase soil fertility, improve overall feed value and extend the grazing season. Bacteria that live in nodules on the legume roots capture atmospheric nitrogen and after the nodules separate from the roots or the plant roots die, this nitrogen becomes available to nearby plants.
- In order for legumes to persist in a pasture, manage the grass-legume mix for the legume. Grass must be kept short enough so that legumes are not shaded out.



CONTROLLING OF Richardson Ground Squirrel

**A Permanent Registration
(PCP # 340433)
of 2% Liquid Strychnine**

Concentrate for Richardson's ground squirrel (Common Gopher) Control. The County of Warner No.5 Agriculture Service Board is urging all farmers and ranchers to consider early control of the gopher population, before green grass begins to appear. Once gophers are active they prefer green grass over grain and the controls registered are grain based. Adult males will emerge by mid-March, while females will generally emerge about two to three weeks after that, or earlier depending on weather. Use of the strychnine should be considered during this time, with proper precautions and safety equipment in place.

The liquid form of 2% Strychnine Concentrate form will be available for purchase by County of Warner rate payers.



To purchase this product please stop in at the Ag. Service Board Shop in Warner or if you require more information please contact

**JAMIE MEEKS AT THE AGRICULTURE SERVICE BOARD SHOP
at (403) 642-2255**

GROWING FORWARD

News Update

Many programs have re-opened as of April 2, 2012 to accept new applications.

THE FOLLOWING PROGRAMS FOR PRODUCERS ARE OPEN:

- Biosecurity (Producer)
- Energy Efficiency Construction Program
- Energy Efficiency Retrofits Program
- Leadership Development Grant
- Stewardship Plans- Grazing and Winter Feeding Management
- Stewardship Plans- Manure Management
- Water Management

If you are interested in any of these programs please apply as soon as possible as funding is on a first come first serve basis and is limited.

Applications are available on www.growingforward.alberta.ca or by contacting Kerry at the Ag. Service Board @ (403) 642-2255

FOR MORE INFORMATION YOU MAY ALSO CALL:

Diana Bingham (Grazing) @780-632-5487
Jennifer Neden (Manure) @ 403-948-8535
Nathan Eshpeter (Energy) @780-422-2086

Murray Tenove (Water) @780-427-4182
Ag-Info Centre @ 310-3276

Growing Forward

The Stewardship Plans- Integrated Crop Management Program is now closed and will not be accepting any applications.

COUNTY OF WARNER NO. 5

Employment Opportunities

The Agriculture Service Board is accepting applications for SEASONAL EQUIPMENT OPERATORS and LABORERS

Employees will report to the Agriculture Fieldmen and will assist in carrying out agriculture programs throughout the County of Warner. Those hired will require a valid Class 5 Drivers License, be self-motivated and responsible, have good communication skills and they must be able to work well as a team but also independently with minimal supervision.

APPLICATIONS WILL BE ACCEPTED AT THE County of Warner Ag. Service Board Shop

Located at: 202 County Road Warner, AB.

You may also fax your application to (403) 642-2256.

For more information please call (403) 642-2255
or email agservice@countyofwarner5.ab.ca

EXCITING JOB OPPORTUNITY

LITERACY COORDINATOR



The County of Warner Further Education Council sponsors the County of Warner Literacy Project - a volunteer tutor adult literacy service. Learners are matched with volunteer tutors for free, confidential tutoring to assist the learner to improve their literacy skills in reading, writing, comprehension, math or computer literacy. The Literacy Coordinator is responsible for:

- Program planning
- Tutor recruitment and training
- Tutor training
- Program administration
- Community liaison

This is a 22-hour per week position for ten months a year with flexible hours. The office is located in Warner, AB.

New coordinator training is available for successful applicant.

Qualifications: Post secondary certificate or degree, computer skills, very effective communication skills, ability to work independently and as a team member, recognize importance of confidentiality, and willingness to pursue professional development.

Please submit resume and references to:
County of Warner Further Education
Box 278, Warner, Alberta T0K 2L0

Applications may be emailed to furthered@countyofwarner5.ab.ca
mailed to above address

dropped off at the County Office, 300 County Road, Warner, AB
Call 403-642-3635 or 1-888-642-2241 for information.

ONLY THOSE SELECTED FOR AN INTERVIEW WILL BE CONTACTED.