

We Have **MOVED**



The County of Warner Agriculture Service Building is located north of the Village of Warner, adjacent to the Public Works Shop. Please visit our new location

Please Join Us For An

OPEN HOUSE

JULY 20, 2018
11:00 a.m. to 2:00 p.m.

BBQ LUNCH AND TOUR

HOURS OF OPERATION

7 a.m. to 5:30 p.m.

Monday through Thursday
403-642-2255 or 1-866-642-2221

Message from Council

2017 was a busy year for the County; we saw the completion of a new waterline to the Hamlet of Wrentham, the construction of a new Ag Service Board shop, the completion of several miles of road improvements and the redevelopment of our website. Another big event in 2017 was the Municipal election in October.

SEE MEET YOUR COUNCILLORS Page 3

County of Warner No. 5



Contact Information:

Administration Office

300 County Road, Box 90
Warner, AB T0K 2L0
Phone: 403-642-3635
Fax: 403-642-3631

Toll Free Number: 1-888-642-2241
Website: www.warnercounty.ca

Shawn Hathaway, Administrator
shathaway@warnercounty.ca

Morgan Strate, Property Assessor
mstrate@warnercounty.ca

Agriculture Service Board

Box 90
Warner, AB T0K 2L0
Phone: 403-642-2255
Fax: 403-642-2256

Toll Free Call: 1-866-642-2221

Jamie Meeks, Agriculture Fieldman
jmeeks@warnercounty.ca

PUBLIC WORKS:

Phone: 403-642-3833
Fax: 403-642-3832

Toll Free Number: 1-888-642-3831

Larry Liebelt, Public Works Superintendent
lliebelt@warnercounty.ca

WHAT'S IN THIS ISSUE:

- Rural Crime Watch & Farm Family AwardPage 2
- Meet Your CouncillorsPage 3
- Public Works, Ag. Services & Development setbackPage 4
- Grain Bags Program & Gopher ControlPage 5
- Youth Range Days and Grazing SchoolPage 7

- Traceability & Alberta Ag. Insect MonitoringPage 8 & 9
- GF2 to Canadian Agricultural Partnership (CAP)Page 10
- Clean + Drain + Dry Aquatic InvasivesPage 11
- Further Education and New County WebsitePage 12

Local farming family receives **STAMPEDE AWARD**

Congratulations to
Doug and Audrey Turner Farm Family

They are the recipients of this year's Farm Family Award!

The Calgary Stampede and BMO Bank of Montreal will be hosting the Awards Ceremony during this year's Stampede to hand out this award to the deserving Southern Albertan Recipients. The objective of the award is to recognize outstanding Southern Alberta farm families "who best typify the value of the family farmer to our rural communities and society in general and to honor these families at the Calgary Exhibition and Stampede." This year the Turner's are that family!

Congratulations to the Turner's!

Rural Crime Watch:

Rural Watch celebrates long history fighting crime

The Rural Crime Watch program, as we know it, began in 1978 supported by four local Associations: The Alberta Cattle Commission, the Western Stock Growers' Association, the Farmers Advocate, and the RCMP. The program was initially called the Range Patrol, and was established to provide additional eyes and ears for the RCMP, whereby these groups organized vehicle patrols in an effort to identify and record suspicious vehicle and human activity in rural areas. Over time however, Range Patrol drew a negative image in the media so the program was renamed "Alberta Rural Crime Watch". Local associations developed throughout the Province during these early years; some of which still carry the Range Patrol reference in their names.

Prior to 1993, Rural Crime Watch Associations were not linked by a provincial body. In 1993 it was decided a province wide umbrella group was needed to support and enhance crime prevention so a committee was formed to produce bylaws and policies. On March 19, 1995, the Alberta Provincial



Rural Crime Watch Association (APRCWA) received official recognition as a Society and the APRCWA Organization has become a supportive organization for member associations.

The focus of the Rural Crime Watch program still provides the extra "eyes and ears" for the RCMP, however the focus has changed. The focus is now promoting Crime Prevention through awareness, education and encouraging reporting of suspicious activity when observed.

The scope of the Alberta Rural Crime Watch Association has expanded. Member Associations are now concentrating their efforts on farmstead,

acreage and rural property security, property identification and general rural crime awareness. Patrol activities are not as frequent, and the "Report A Poacher" program has been included in the Rural Crime Watch Association's activities.

The Rural Crime Watch Program was designed to reduce the incidence of crime in all rural areas and to create a more thorough understanding and awareness of the laws. It is completely voluntary, involving all rural residents working in cooperation with their local RCMP detachments.

To be a member of the Alberta Provincial Rural Crime Watch you need

to be a non-profit organization in good standing. Start by holding an organizational meeting. Pick your executive and then apply for a non-profit. Pick your name and then check the nuances to make sure the name is not being used, (you need to go into a Registries Office to complete this task). Once you have received your not for profit paperwork, fill out the membership renewal application and submit it with your membership fee and a copy of your certificate of incorporation. To comply with our obligations all organizations must be a non-profit organization in good standing with Corporate Registries. Membership dues are \$200.00 per year.

The RCMP "K" Division has signed a memorandum of understanding with Alberta's Crime Watch. If there is interest in your area to start a rural crime watch program you are encouraged to talk to your local RCMP detachment for further information or visit

www.ruralcrimewatch.ab.ca

COUNCIL MEMBERS *Across the County*



Division #1 Milk River
DAVID CODY
dcody@warnercounty.ca



Division #2 Coutts
ROSS FORD, REEVE
rford@warnercounty.ca



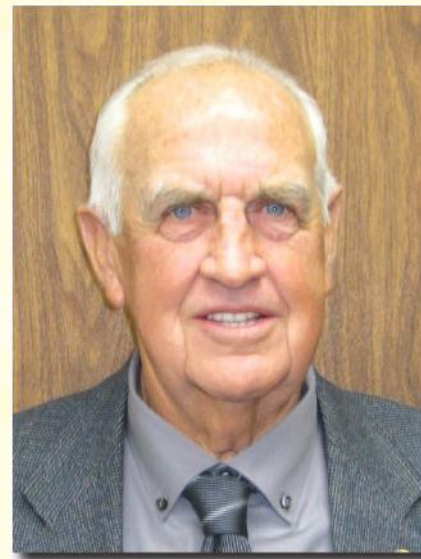
Division #3 Raymond
PHIL JENSEN, DEPUTY REEVE
pjensen@warnercounty.ca



Division #4 New Dayton
RANDY TAYLOR
rtaylor@warnercounty.ca



Division #5 Warner
SHAWN RODGERS
srodgers@warnercounty.ca



Division #6 Stirling
DON HEGGIE
dheggie@warnercounty.ca



Division #7 Wrentham
MORGAN ROCKENBACH
mrockenbach@warnercounty.ca

Meet Your Councillors

Continued from Page 1

The County saw two new Councillors at the municipal election, Morgan Rockenbach in District 7 and Shawn Rodgers in District 5. Changes to provincial legislation that governs municipalities has also changed which will lead to some minor changes to the way the County operates. The province instituted mandatory training for elected officials which was completed

by the County Council in January. They also introduced mandatory inter-collaboration frameworks and mandatory intermunicipal development plans. This means over the next two years the County will be working with its urban and rural neighbours to evaluate which services are offered to its residents and determine if current agreements are satisfactory or if there needs to be changes to how the municipalities interact. These

also deal with development issues surrounding the urban areas. The County and the Towns and Villages will work together to develop long term development plans in the areas around their borders.

2018 is shaping up to be another busy year; we have experienced above normal snowfall and the spring thaw has proven to be a challenging one with overland flooding causing issues in many

areas of the County. When weather permits we will begin the process of repairing all the damage caused by the overland flooding as well as continuing on with all of the other daily activities the County is responsible for. We are looking forward to another exciting year in 2018 and encourage you to refer to our website for information regarding upcoming training and events that is put on by the County of Warner.

PUBLIC NOTICE - Roadside Spraying -

The County of Warner will be controlling broadleaf and noxious weeds on:

- Developed and undeveloped road allowances.
- Newly constructed roads.
- Bladed trails.
- Established roads.
- Other public areas as deemed necessary by the Ag Fieldman.

Commencing May 1, 2018 to September 30, 2018 the County will be conducting roadside spraying activities with care and consideration. Selective Spraying to ensure effective control of *target* plant species will be done.

If you have any questions about which weeds are noxious or which weeds are considered prohibited Noxious within the County of Warner, please contact the Ag Fieldman at the Ag Service Board Building by calling (403) 642-2255

PUBLIC WORKS

2018 is shaping up to be a very busy year for public works, starting with what felt like endless snow, leading to drainage issues and soft roads throughout the entire County. All of the extra water that rushed through the County will lead to an increase of work required on the roads to get them back in shape.

We understand the importance of a reliable transportation network and public works staff have been working hundreds of overtime hours to try to keep the roads open. Thank you for being patient with us as we continue to work through the spring thaw and get the roads back in shape.

Gravel Request Forms and Dust Suppression Forms can be found on the County of Warner website. All requests must be in by May 15th of the current year.

The newly developed website for the county of Warner can now be viewed online at <http://www.warnercounty.ca>.

FIRE PERMITS

All open fires require a permit - YEAR ROUND - Please contact your nearest Fire Chief before lighting any open fire.

This does not include screened burning barrels or fire pits at recreational areas. **Please obtain a fire permit by calling your local fire department's fire chief.** Their contact information is available on our website www.warnercounty.ca. If they are unavailable please contact the Community Peace Officer, at 403-715-8513.

When a **Total Fire Ban** is in effect **no permits will be issued.**

DEVELOPMENT INFORMATION

Road Setbacks – Buildings and other developments/improvements such as dugouts, must be at least 120 feet from the property line, unless the road is a primary or secondary highway. If the road is a primary or secondary highway, the setbacks are established by Alberta Transportation.

New shelterbelts

must be set back 25 feet from any property line and must be set back at intersections so sight lines are not obstructed. The above setbacks are also required for undeveloped road allowances.

Stockpiles are defined as the temporary storage of materials on or off a hard surface. Materials stored include: soil, manure, forage crop, or machinery. The setbacks shown in the above paragraph must be met.

A full copy of the Land Use bylaw and Development Application forms are available on our newly developed website and can now be viewed online at <http://www.warnercounty.ca>.

Dugouts: may be exempted from requiring authorization under specific conditions. If the dugout does not meet the conditions of the exemption, an approval and/ or a licence is required. Additional information regarding the exemptions for dugouts can be found in the Dugouts fact sheet available on Alberta Agriculture website at: Water Act: Dugouts, Borrow Pits and Other Pits/Excavations - Education/Guidelines

Spray Drift

The county asks that special care is taken by farmers are spraying their crops. We are experiencing increasing spray drift incidents with glyphosate trespassing on county road allowances; killing the desired grass and vegetation in the ditches, which brings on unwanted weed infestations and erosion to shoulders and ditch bottom.

AG. SERVICE BOARD

Services Offered and Rental Rates for 2018:

Great Plains No-Till Drill

15 Acres or Less:

- \$25 Service Charge Plus Flat Fee of \$200 or

- 16 Acres or More: \$25 Service Charge Plus

- \$12 Per Acre

- \$100 Clean-out Fee if Drill is not cleaned satisfactorily

- Maximum 80 Acres

Tree Spraying / Bin Fumigation c/w Operators

- \$25 Service Charge Plus \$200 per hour, Plus total cost of chemical

Weed Spraying – Private

Prohibited Noxious and Noxious Weed Control - Policy 630.19

- \$25 Service Charge Plus \$150 per hour, Plus total cost of chemical

- Based on 2 ATV's/Truck and Trailer or pick-up truck/sprayer

Tree Planters

- \$25 per Day

Plastic Mulch Applicator

- \$25 per Day

Mowing

- Hamlets \$80.00/hr
- Private Rural \$93.00/hr
- Additional Manpower \$25/hr



Richardson's Ground Squirrel (RGS) **GOPHERS**

The County of Warner Agriculture Service Board is urging all farmers and ranchers to consider early control of the gopher population, before green grass appears.

This spring has not been easy for ground squirrels to get going, and the late snow cover makes them easy targets for predators and shooters. Cool, wet weather does not favour the RGS. If you are in a treeless area, nesting platforms for raptors is a good way to help birds of prey. Platforms need to be set up for a period of time before the raptors get familiar with them. Platforms can be simple: two large round bales set on end, one on top of the other, or a more permanent structure. Raptors are very territorial, so no more than one platform needs to be erected per quarter section.

Products available for purchase through the ASB shop include:

- 2% Liquid Strychnine Concentrate for Agricultural producers.
- Rozol (anti-coagulant) Ready-To-Use Premix in 20 lb pail and 50 lb bag.
- Also registered for ground squirrel control in Alberta is the fumigant, aluminum phosphide and is available to producers with a *valid* Farmer's Pesticide Certificate (FPC).

To purchase these products please stop in at the Ag. Service Board Building located north of the Village of Warner, adjacent to the Public Works Shop or if you require more information please contact the Ag Fieldman at (403) 642-2255.



*Clean Farms Upcoming
Obsolete Pesticides Collection Days*

OBSOLETE PESTICIDE & LIVESTOCK MEDICATION

What products are usually accepted?

- Obsolete or unwanted agricultural pesticides (identified with a Pest Control Product number on the label).
- Livestock medications that are used by primary producers in the rearing of animals in an agricultural context (identified with a DIN number, Ser. Number or Pest Control Product number on the label).

If you are unsure whether your product fits the scope of this collection please call us at 877-622-4460 ext. 2227

OBSOLETE PESTICIDE & LIVESTOCK MEDICATION

OCTOBER 22 – 26, 2018

SOUTHERN REGION

Drop-off locations to be announced.

County of Warner Agriculture Service Board

4th Annual GRAIN BAG COLLECTION

The county will be accepting your **empty, clean, tightly rolled and tied with twine**, grain bags on the following Wednesdays. May 9th, 16th, 23rd and 30th

We will not be able to accept your grain bags unless they are...

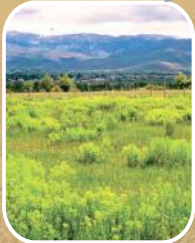
- Empty
- Clean
- Tightly rolled
- Tied with twine

If you would like to participate in this grain bag collection, please contact James Wills at the Ag Service Board at **403-642-2255** to schedule a delivery time. You must schedule so we can be sure to have staff and equipment available to unload your plastics.



WATCH OUT INVASIVE WEEDS in the County

Leafy Spurge



Leafy spurge (*Euphorbia esula* L.) is a perennial up to 3 feet tall; it reproduces by vigorous rootstalks and seed. Leaves are alternate, narrow, 1 to 4 inches long and the stems are thickly clustered. The flowers are yellowish-green, small, arranged in numerous small clusters and subtended by paired heart-shaped yellow-green bracts. Roots are brown, containing numerous pink buds which may produce new shoots or roots. The entire plant contains a milky juice. Seeds are oblong, greyish to purple, contained in a 3-celled capsule, each cell containing a single seed.

Leafy Spurge is native to Eurasia and was brought into the United States as a seed impurity about 1827. It infests almost 2.5 million acres in North America. It has been reported to cause severe irritation of the mouth and digestive tract in cattle which may result in death. Capsules explode when dry, often projecting seeds as far as 15 feet. Seeds may be viable in the soil for up to 8 years. An extensive root system containing large nutrient reserves makes leafy spurge extremely difficult to control.

Houndstongue



Houndstongue (*Cynoglossum officinale* L.) is a biennial growing 1 to 4 feet tall and reproducing by seed. Leaves are alternate, 1 to 12 inches long, 1 to 3 inches wide, rough, hairy, and lacking teeth or lobes. Flowers are reddish-purple and terminal. The fruit is composed of 4 prickly nutlets each about 1/3 inch long.

Houndstongue was introduced from Europe. It forms a rosette the first year and sends up a flowering stalk the second year. The leaves are rough and resemble a hound's tongue. It may be found in pastures, along roadsides and in disturbed habitats. The nutlets break apart at maturity and cling to clothing or animals. Houndstongue is toxic, containing pyrrolizidine alkaloids, causing liver cells to stop reproducing. Animals may survive for six months or longer after they have consumed a lethal amount. Sheep are more resistant to houndstongue poisoning than are cattle and horses. Horses may be especially affected when confined in a small area infested with houndstongue and lacking desirable forage. Therefore, ranges and pastures should be maintained to encourage production of grasses and high quality forage.

These weeds can spread rapidly, encroach on pastures and threaten wildlife habitat. If you see either of these weeds, please note the location and contact the County of Warner Ag Service Board: 403-642-2255



SAVE THE DATE! • JULY 24TH - 25TH, 2018 • Stavelly, AB

15th Annual

Southern Alberta Grazing School for Women

TOPICS INCLUDE:

- Verified Sustainable Beef Program
- Grazing Research
- Utilizing Electric Fencing
- Range Health
- Plant ID
- Grazing Principles and Practices
- Riparian Health

For more info contact:

Kristi Stebanuk at
403-382-4345

kstebanuk@cowsandfish.org

Follow us on Facebook!

"Grazing School for Women"



Southern Alberta Youth Range Days 2018

Save the Date

July 10-12th 2018

Ages 13-18

Families are welcome!



Location:

Rangeview Ranch
(Cardston County)

Trail riding, river sports, bugs, birds and much more!

The Southern Alberta Youth Range Days program is an interactive event for youth, and families, interested in learning about a variety of rangeland, watershed, wildlife, and other topics related to natural resource management.

Youth from all backgrounds including farm and ranch, city, acreage or town, are welcome to attend.

Working agricultural landscapes are critical to environmental sustainability. Range Days program celebrates our heritage and provides a mentoring environment for youth with experts working within southern Alberta on these topics!



Southern Alberta Youth Range Days

For more information contact: youthrangedays@gmail.com or
Stephen Bevans (Cardston County): 403-634-9474

Alberta Agriculture Insect Monitoring Program



Ambush bug
(a beneficial predator)



Cabbage seedpod



Bertha army worm

This program is coordinated by Scott Meers, Insect Management Specialist with Alberta Agriculture and Forestry and his technician, Shelley Barkley.

There are seven main surveys. Pea leaf weevil, cabbage seedpod weevil, diamondback moth, bertha armyworm, grasshoppers, wheat midge and wheat stem sawfly. In addition, we will be doing several smaller surveillance surveys including a survey of the new canola flower midge. This survey will concentrate in central Alberta and into the Peace River region.

The pea leaf weevil survey, conducted in late May and June and will be carried out throughout Alberta in 2018. This survey is done by counting the number of feeding notches on 10 plants in 5 locations in the field. We work along the headland and do not enter the field at all. **If you have a pea field that we could survey please contact us at the email provided below.**

Bertha armyworm (June/July) and diamondback moth (May/June) surveys are pheromone based and are conducted by cooperators. Traps are placed on canola field margins and checked weekly. Results are tabulated by cooperators; Trap counts are entered by cooperators using a web-based reporting system and automatically reported via our web page. We are always looking to fill holes in our monitoring system. If producers or agrologists wish to participate, we welcome their assistance and will provide all needed supplies.

Cabbage seedpod weevil survey is done at early flower by taking a set of 25 sweeps with a sweep net. The number of cabbage seedpod weevils, lygus and diamondback moth larvae are reported. In addition, we have a reporting tool which agrologists can report the cabbage seedpod weevil numbers they are finding.

The grasshopper survey is carried out by agriculture fieldmen (during early August) in their county each year. The results are tabulated by Alberta Agriculture and Forestry. This is the most heavily utilized survey of the seven we coordinate.

Wheat midge and wheat stem sawfly surveys are carried out after harvest each year. The sawfly survey involves assessing the percentage of sawfly cut stems in 4 locations, 1 meter long, in each field. This survey is done in the traditional wheat stem sawfly area of southern Alberta and eastern central Alberta. Wheat midge is surveyed in all wheat growing areas of Alberta. This survey involves taking soil cores and washing overwintering larvae out of the soil. From this a forecast is prepared on the risk of midge populations the next year. **If you have a wheat field that we could survey please contact us at the email provided below.**

We never drive in fields, rather parking on the roadside and walk in. We ALWAYS use sterilized boots or boot covers when entering fields and any tools that are used (ie soil sampler etc) are sterilized between fields. Our field entry protocol can be found on our website.

Agriculture Fieldmen receive a year-end report for their county. Any producer that volunteers a field (or fields) will also get a year-end report from our program on what was found.

The program email is bugs.r.us@gov.ab.ca

Insect monitoring/information website: www.agriculture.alberta.ca/bugs-pest

Shelley Barkley

Insect Research Technologist

Email: shelley.barkley@gov.ab.ca

Scott Meers

Insect Management Specialist

Email: scott.meers@gov.ab.ca

**Crop Diversification Ctre S 301 Horticultural Stn Rd E
Brooks Alberta T1R 1E6**

Phone: 403 362-1350 • Fax: 403 362-1326

[Pest Surveillance Section](#)

To see current insect issues, visit agriculture.alberta.ca/bugs-pest

Alberta Insect Pest
Monitoring Network



WANTED

FIELDS WITH WIREWORM

Dryland fields with a history of wireworm that will be seeded to spring wheat or durum in 2018 and had one of the following rotations in 2016-2017:

- Cereal - Cereal
- Cereal - Canola
- Canola - Cereal
- Canola - Pulse

Must be within a 2-hour drive of Lethbridge:

We will set up and maintain small insect traps in these fields beginning in April 2018 (pre-seeding) until harvest to monitor wireworm populations in response to crop rotations.

Participants in this research will get to know a lot more about the insects in their fields.

Contact:

**Dr. Haley Catton,
Cereal Crop Entomologist
Agriculture and Agri-Food
Canada,
Lethbridge Research and
Development Centre
403-317-3404
haley.catton@canada.ca**

NUTRIENT MANAGEMENT

Knowledge Nuggets – Foragebeef.ca

■ Soil fertility can be affected by pasture utilization and manure distribution patterns of grazing cattle. Management to keep manure evenly distributed in a pasture to maintain soil fertility lowers pasture costs and improves productivity.

■ The challenge to a producer is to maintain soil nutrients at or near optimum levels as great a part of the pasture as is economically feasible. The choice of the forage-livestock management system can have a profound impact on the efficiency of nutrient return to grazing lands by the grazing animal.

■ Livestock excrement represents a valuable, recyclable source of soil nutrients on pasture because 60-95% of the nutrients consumed by grazing livestock pass through the digestive tract. Well distributed manure from grazing cattle contributes to added pasture growth.

■ Temporary water systems utilizing plastic pipe laid over the soil surface and movable tanks work well and allow flexibility in keeping stock from congregating in loafing areas. Portable water systems are a powerful

tool for managing manure cycling.

■ Paddocks should contain a watering tank and also be laid out as near to square as possible to help facilitate in a more uniform manure distribution pattern.

■ Shade and watering locations are sites of P and K accumulation in pastures because cattle tend to camp, loaf, defecate and urinate in these areas. While the nutrient gradient around shade areas does not seem to extend as far as around watering sites, the nutrient level is often higher than around watering sites.

■ Grazing system features such as the number of paddocks, rotation frequency, stock density and water accessibility influences the distribution pattern of nutrients from grazing cattle manure.

■ Distance traveled to water affects manure distribution. In larger paddocks greater grazing pressure occurs near the water source. This results in a significant manure gradient toward the water source as compared to manure distribution in smaller paddocks.

■ Cattle in paddocks should have ready access to water, preferably within 700'-900' of the water

source. Avoid laneways to prevent a nutrient loss of 15 - 20% due to cattle loafing and excreting in the lanes instead of in the paddocks.

■ The impact of dung pats on pasture growth is longer term than urine due to slower dung decomposition and secondly the nutrient type and content of dung is phosphorus which is very stable and provides a longer effect on the soil and plant growth. Urine is the primary excretory path for potassium and soluble nitrogen which are relatively unstable, resulting in a short-term effect.

■ Dung pats are uniformly spread in pastures through increasing stocking density and decreasing grazing time. As the dung pats are spread more uniformly in the pasture, the rate of breakdown increases and nutrients become available sooner to plants.

■ Grazing systems that supply water in every pasture and have the flexibility of water site placement require infrequent fertilization. Soil tests can be taken on a 3 to 4-year frequency to monitor nutrient status and plan fertilization strategies.

Traceability in Alberta

Hey, What's Your Number? In Alberta, You Need a Premises Identification (PID) Number to

- Complete movement documents like manifests and permits
- Buy medication for your animals
- Sell livestock
- Apply for many agriculture grants, programs and licenses



Premises Identification (PID) Program

Do you have a PID Number?
Call 310-FARM to confirm
or Apply Online!

By registering your account online you will have direct access to your information and the ability to immediately make any changes to it.

Registration is easy; simply follow the prompts.



agriculture.alberta.ca/premises

Traceability Protects!

Your Animals - Your Livelihood - Our Future

PID, one of the three traceability pillars, links livestock and poultry to land locations or premises. Traceability information can be accessed quickly for the protection of our industry.



For more information on Traceability in Alberta

agriculture.alberta.ca/traceability



Hey, What's Your Number ?

Pet, Hobby or Livestock? Do you need a PID Number?

You may call your animal a pet or a backyard hobby, but if it is also livestock you must have a **Premises Identification Number (PID)** from Alberta Agriculture and Forestry.

From backyard chickens and bees to horses, quail, yaks and pheasants, the owners of livestock and poultry across Alberta are being reminded that they are required to register for a mandatory PID Account and Number with the province. It's free, simple to apply for and in an emergency - such as a fire, flood or disease outbreak - your family of animals, birds and bees will be known to emergency personnel. You also need a PID Number to purchase medicines from Authorized Medicine Retailers, apply for grants, programs and licenses as well as complete movement manifests among other things.

If you board your pet elsewhere - like a horse at a boarding stable - you will need to know the PID Number for where it is located.

Animals, fish and poultry to be registered in the PID system, includes:

- alpacas
- beef cattle
- bees
- bison
- cervids
- dairy cattle
- donkeys
- doves
- ducks
- fish (under class A commercial or a class B commercial fish culture licence)
- fur-bearing animals as defined in the *Fur Farms Act*
- geese
- goats
- guinea fowl
- horses
- llamas
- mules
- peafowl
- pheasants
- pigeons
- poultry
- quail
- rabbits raised for the production of meat
- ratites (large flightless birds such as: Emu, Ostrich)
- sheep
- swine
- wild boars
- yaks.

Traceability Protects!

Your Animals - Your Livelihood - Our Future



For more information on Traceability in Alberta, call 310-FARM (3276) or go online to

agriculture.alberta.ca/traceability

Growing Forward 2

GROWING FORWARD 2 TO CAP

Canadian Agricultural Partnership Environmental Stewardship and Climate Change Producer Program

Program Overview

- Visit the website www.cap.alberta.ca for information. Sign up to subscribe for updates. You will need to re-subscribe if you received updates from the old Growing Forward 2 programs.
- Environmental Stewardship Climate Change Producer Program supports producers in reducing negative impacts on the environment, while enhancing sustainable production, managing climate change and increasing profitability.

Application Process

- Applications found on the CAP Website under Environmental Stewardship.
- 3 different application forms, depending on what category you are applying for.
 - Category A – Grazing Management
 - Category B – Manure & Livestock Facilities Management
 - Category C – Agricultural Input & Waste Management
- A current Alberta Environmental Farm Plan (EFP) is required. A current EFP is no older than 10 years old. You will have until the end of your project term to update your EFP.

Eligible Activities

- Cost shares will range from 30 to 70%, with specific cost share being determined at the time your application is processed. Funding decisions will be based upon environmental risks identified by applicants and the extent to which the proposed project will mitigate these risks.
- All innovative codes and any project that is more complex will go to the review committee.
- 4 review cycles this year - May 15th, June 27th, August 29th and November 14th. Results usually within a month of review date.
- Maximum eligibility is \$100,000 per farm for the entire ES&CC Producer category, but maximums also vary by activity code.
- Activities include (but not limited to):
 - Watering systems
 - Riparian fencing
 - Livestock facility management
 - Improved manure storage facilities
 - Manure application
 - Sectional controls
 - Agriculture plastic bag rollers
 - Shelterbelts
 - This program also has a stronger focus on "Innovative Solutions", (the last activity code in each category) for submission of new and clever ideas.
- Labour and in-kind expenses – maximum 25% of eligible expenses.
- Program is not retroactive. You cannot purchase project supplies or materials until your project application is received.

For more information on programs please contact:
Growing Forward 2 to CAP – Canadian Agricultural Partnership
Barbara Archibald, P. Ag.
Growing Forward Extension Specialist

Alberta Agriculture and Forestry
97 East Lake Ramp NE, Airdrie, AB T4A 0C3
Phone: (403) 948-8518 • Fax: (403) 948-2069 • Email: barbara.archibald@gov.ab.ca

South Grow Regional Initiative Program
Vern Steinborn
P: 403-894-0050 • Vern Steinborn vern.steinborn@southgrow.com

- Farm Energy Agri-Processing Program open
 - On-Farm Energy Management Program
 - Accelerating Agricultural Innovation Program
 - The On-Farm Solar PV Program



RENEW YOUR PLAN, ACCESS FUNDING, REVITALIZE YOUR FARM

If your Alberta Environmental Farm Plan is more than ten years old, you will need to update it for your farm to be eligible for some funding programs. Renewing your plan gives you better access to markets and funding. With our new online platform and our network of trained technicians across Alberta, it is easy to update your environmental farm plan on a regular basis. Connect with us for more information at www.albertaefp.com

ON-FARM SOLAR PHOTOVOLTAICS (OFSPV) PROGRAM

To be eligible for funding, a Photovoltaic system must be:

- Grid-tied, not off-grid
- Approved under Alberta's Micro-Generation Legislation
- Positioned to optimize sunshine and minimize shading
- Have manufacturer-warranties on: Solar modules, Racking, Inverters and/or Micro-inverters, and
- Installed on a Site ID that has a Distribution Rate Class of Farm, Irrigation, Grain Drying, or equivalent

Retroactive projects that have been completed AFTER APRIL 15, 2017 are eligible. See website for more details!

Ag-Info Centre: **310-FARM (3276)**
agriculture.alberta.ca/solar

DON'T LET THEM CATCH A RIDE

CLEAN + DRAIN + DRY YOUR BOAT



As an Alberta angler, you are probably seeking new fishing holes at different lakes, both inside and outside of the province. This can vastly increase the risk of moving aquatic invasive species as they hitch a ride on boats, trailers and gear. Invasive species, such as zebra and quagga mussels, can collapse fisheries, damage boats and personal property and cost millions in repairs to vital infrastructure.

Protect your boat and the local fisheries by keeping our waters free of invasive species. **CLEAN** off plants and debris, **DRAIN** bilges and ballast tanks and **DRY** the wet areas of the boat every time you take it out of the water.

FOR MORE INFORMATION ON INVASIVE SPECIES, CALL:

1-855-336-BOAT (2628)

Alberta
Government

(Clean, drain, dry)

HENINGER RESERVOIR

County of Warner

This 210 acre site is located approximately 50 km northeast of Milk River and provides access to a stocked reservoir for rainbow trout angling opportunities. Other recreational opportunities include upland game bird and waterfowl hunting, nature viewing and photography. A parking area, boat launch, garbage cans and sanitary facilities are available.



(Clean, drain, dry)

TYRRELL LAKE

County of Warner

This 72 acre site is located approximately 42 km south of Lethbridge on Highway 4 and consists of upland habitat and an access point for fishing. Travel south on Highway 4 from Lethbridge and then turn east on Twp Rd 54 and travel 2.5 km. Wildlife found in the area includes upland game birds, waterfowl, shorebirds and a variety of small mammals and songbirds.



(Clean, drain, dry)

RIDGE RESERVOIR

County of Warner

Located on a huge irrigation reservoir with 31 powered sites and 17 non powered sites, two camp kitchens, boat ramp, swimming area, washrooms, overflow area and RV Dump Station. Potable water is available. The park is owned by the County of Warner No. 5, however, maintenance and fee collection is contracted out. The park is open from April 15 to October 15. Fees: Power \$30, no power \$20, day use/boat dock fee \$5.

The park is located on Secondary Highway 506. No reservations accepted. Limited long term sites available. Contact the park contractor. Cell phone: 403-393-8297; email: ridgepark17@gmail.com

(Clean, drain, dry)

CHIN RESERVOIR

County of Warner

Chin Park is located on a large irrigation reservoir. It is located on Highway 36, approximately 22 miles north of the Village of Warner and south of the Town of Taber on Chin Reservoir. There are 12 sites with electrical hookups and an overflow area. The park is owned and maintained by the County of Warner No. 5. There is a new boat dock, boat ramp, swimming area, camp kitchen, and washrooms. Potable water is available. The park is open from April 15 to October 15.

Fees: Overnight with power \$30, no power \$20, day use/boat dock fee \$5. No reservations accepted.



County of Warner set to go surfing

By Kuhl, Nick on April 16, 2018.

Demi Knight

Southern Alberta Newspapers - Warner

County of Warner is making surfing the web easier for the community this year with their newly-updated website.

Creating a more user-friendly space that can be easily accessed from all devices, the County of Warner officially launched their new website to the world last month.

Last updated almost eight years ago, the County of Warner's website had grown outdated to the new wave of technology that is becoming more and more prevalent within today's society.

This new website makes it easier to access information as we've worked on consolidating information into single pages instead of multiple and added the option

for people to add service requests through the website to different departments in the county.

Also included in the newly-remodelled website's homepage is a quick links section that offers users fast access to areas such as planning and development, assessment and taxation, public works, bylaws and more.

The website is also home to a banner that spans the length of the page offering important notices such as fire and road bans in effect, meeting minutes, and staff directory.

The newly developed website for the county of Warner can now be viewed online at

<http://www.warnercounty.ca>.

Full Article to view at the link below:
<http://lethbridgeherald.com/news/lethbridge-news/2018/04/16/county-of-warner-set-to-go-surfing/>



COOL ACTIVITIES TIME

The C.A.T is coming to your community!

What? The C.A.T. program is filled with easy activities that help to develop literacy and numeracy skills in young children. Your child will learn through games, puppets, puzzles, stories and more!! A fully trained Family Literacy Facilitator will be on hand to make this a FUN LEARNING experience!

Who? Children 0 to 6 years. **Parent or caregiver must accompany children.**

Where? Milk River Library, 321 – 3 Avenue

When? Tuesdays, May 8 – June 12, 2018, 2:00 pm – 3:00 pm

Where? Warner Library, 206 – 3 Avenue

When? Tuesdays, May 8 – June 12, 2018, 11:00 am – 12:00 pm

Cost? FREE - FREE - FREE

Please register in advance for this exciting program!

For information contact Further Education and Literacy
 Telephone: (403) 642-8607 or Email: furthered@gmail.com



FURTHER EDUCATION AND LITERACY IN THE COUNTY OF WARNER

www.warnercommunitylearning.org | furthered@gmail.com | 403.642.8607

May Programs

May 8 – **Cool Activities Time (C.A.T.)**

June 12 Parents with children 0-6 years

Tuesdays 11:00 am – 12:00 pm Warner

Library

2:00 pm – 3:00 pm Milk River

Library

May 8 **Internet Safety for Parents of School Aged Children**

Live Streamed Lethbridge Police Presentation

Warner School

May 8 **Maintaining Your Brain**

Stirling Seniors Centre

6:00 pm – 7:30 pm

May 9 **Myths of Aging**

Warner Seniors Centre

May 9 **What do I Say? Talking to Kids About Sex**

Warner Village Office (Stay and Play Room)

Everyone welcome. **Childcare provided**

10:00 am – 12:00 pm

May 30 **Self Care for Parents / Caregivers**

Warner Village Office (Stay and Play Room)

Everyone welcome. **Childcare provided**

10:00 am – 12:00 pm

Registration is required for all programs.
 Please call (403) 642-8607, [email furthered@gmail.com](mailto:furthered@gmail.com) or register online: www.warnercommunitylearning.org